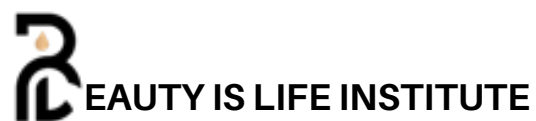


PROSPECTUS



# LASH EXTENSIONS

---



## ■ About Us



Beauty is Life Institute™ is a premier beauty and aesthetics training center dedicated to shaping the next generation of industry professionals. With locations in Paarl and Johannesburg, we specialize in empowering individuals with cutting-edge skills, managerial expertise, and entrepreneurial insights to thrive in the dynamic beauty and wellness sector.

Our holistic approach combines the latest advancements in aesthetics with innovative business practices, ensuring our graduates are well-equipped for success.

At Beauty is Life Institute™, continuous learning and professional development are at the heart of everything we do, fostering excellence, innovation, and expertise in every student we train.

## ■ Our Philosophy

Beauty is Life Institute™ is dedicated to shaping the next generation of Health and Skincare professionals. Rooted in respect, integrity, and industry expertise, we combine eco-friendly principles with high-quality, results-driven training.

We mentor and inspire our students to excel in the dynamic beauty industry, offering lifelong support and a focus on excellence. At Beauty is Life Institute™, we don't just teach – we empower careers.



## ■ What does this course entail?

Lash technicians hold a vital position in the beauty industry, enhancing clients' natural beauty by applying lash extensions that transform their look and boost their confidence. This transformation often leads to repeat business and positive referrals, contributing to the growth of a successful beauty career. As the demand for lash extensions continues to rise, these professionals are in high demand, making them an invaluable asset to any salon or spa.

A lash technician's expertise lies in customizing lashes to suit each client's specific needs, ensuring they are applied safely and correctly. A well-trained lash technician offers not only skillful lash application but also an understanding of how to ensure the overall health of the client's natural lashes. Their ability to communicate with clients, understand their preferences, and deliver the right look is what sets them apart.

By enrolling in a professional lash extension course, individuals can acquire the knowledge and hands-on training necessary to become a certified lash technician. This course provides a solid foundation in all aspects of lash application, from proper sanitation practices and adhesive safety to advanced styling techniques.

With this skill, lash technicians are equipped to offer high-demand services that contribute to their salon's success and build a loyal client base. As they stay current with industry trends and continually refine their skills, they ensure that they deliver top-tier services, which will ultimately increase their revenue and reputation.



# Lash Extensions Course Outline:

- Understanding different types of lash extensions and their properties
- Client consultation and aftercare instructions
- Sanitation and infection control practices
- Proper placement and styling of lash extensions
- Adhesives and safety precautions
- Lash mapping techniques for personalized designs
- Lash extension removal techniques
- Advanced techniques for volume lash extensions
- Understanding the eyelash growth and natural shedding cycle
- Techniques for filling and maintaining lash extensions
- Promoting eyelash health and preventing damage during application
- Troubleshooting common issues during lash extension application
- Building and maintaining a successful lash extension business
- Client Consultation and Allergy Testing: Emphasize the importance of patch testing to avoid allergic reactions and ensure the best product compatibility.
- Lash Extension Styles and Trends

Where LASH  
EXTENSIONS and  
BEAUTY unite for  
your success.

## ■ Course Details

Beauty is Life Institute offers training in lash extensions across various locations: Paarl and Johannesburg. Our students can study the theory remotely through online classes, while practical sessions are held at their nearest Beauty is Life Institute location. This blended learning approach allows students to gain valuable industry insights and hands-on experience from the start of their training, ensuring they are fully prepared to pursue a successful career as lash extension professionals.

**Our Paarl Branch:**

Spice Route Destination;  
Suid-Agter-Paarl Road  
Paarl; Western Cape

**Our Johannesburg Branch:**

Honeydew Eco Village  
281 Honeydew Road  
Northriding AH,  
Johannesburg; Gauteng

## ■ Investment in Your Future

**Cost of Course: R7 500 EXCLUDING KIT**

**Cost of Kit (optional): R2 000 Beginner Lash Kit**

**Deposit of R1 200 is required to secure your place in the course.**

**Registration Cost: R550**

**Course Duration: 3 Days**

**The cost of the course includes:**

- All necessary study materials

At Beauty is Life Institute, we are dedicated to empowering the next generation of lash extension professionals with the knowledge, skills, and experience needed to succeed. Our course is designed to provide a thorough education, blending theory with hands-on practice, ensuring that students are well-prepared to excel in the lash extension industry. We look forward to welcoming you to our community and supporting you on your journey to success.

## Let's Get In Touch

### Contact Us

#### Paarl Enquiries:

info@beautyislifeinstitute.co.za

Elzette Calitz 082 726 6514

#### Johannesburg Enquiries:

Elisna van Wyk 082 974 9207

eli@healthyandwell.co.za

### Visit Our Website

[www.beautyislifeinstitute.co.za](http://www.beautyislifeinstitute.co.za)

