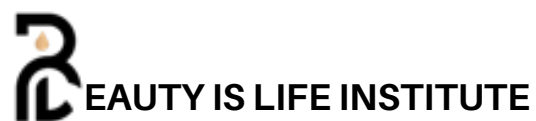


PROSPECTUS



SPA MANAGEMENT



■ About Us



Beauty is Life Institute™ is a premier beauty and aesthetics training center dedicated to shaping the next generation of industry professionals. With locations in Paarl and Johannesburg, we specialize in empowering individuals with cutting-edge skills, managerial expertise, and entrepreneurial insights to thrive in the dynamic beauty and wellness sector.

Our holistic approach combines the latest advancements in aesthetics with innovative business practices, ensuring our graduates are well-equipped for success.

At Beauty is Life Institute™, continuous learning and professional development are at the heart of everything we do, fostering excellence, innovation, and expertise in every student we train.

■ Our Philosophy

Beauty is Life Institute™ is dedicated to shaping the next generation of Health and Skincare professionals. Rooted in respect, integrity, and industry expertise, we combine eco-friendly principles with high-quality, results-driven training.

We mentor and inspire our students to excel in the dynamic beauty industry, offering lifelong support and a focus on excellence. At Beauty is Life Institute™, we don't just teach – we empower careers.



■ What does this course entail?

A spa manager plays a vital role in the success of any wellness business. They are responsible for overseeing all aspects of spa operations, from managing staff and ensuring exceptional customer service to maintaining financial health and implementing effective business strategies. A skilled spa manager creates a welcoming and comfortable environment for clients while ensuring the spa runs efficiently and achieves its goals.

This multifaceted role requires more than just practical management skills. Successful spa managers must also possess strong interpersonal skills to effectively lead teams, communicate with clients, and build positive relationships. They must stay informed about the latest trends and innovations in the health and wellness industry to keep their spa competitive and appealing to clients.

A competent spa manager ensures the business thrives by fostering teamwork, making informed decisions, and consistently delivering a high-quality experience for every client.

This course is designed to prepare you for this dynamic and rewarding career. Through comprehensive training, you will develop the knowledge, skills, and confidence to excel as a spa manager. From mastering essential leadership techniques—such as communication, delegation, motivation, and team-building—to gaining insights into the latest wellness trends, this course provides everything you need to succeed.





Spa Manager Course Outline:

1. Revenue Growth and Financial Management

- Driving revenue through effective strategies
- Financial planning and management
- Developing and implementing a business plan

2. Time and Team Management

- Mastering time management techniques
- Building and maintaining team structures
- Managing staff and optimizing team performance
- Handling customer complaints professionally

3. Operational Excellence

- Spa reporting systems and template utilization
- Performance analysis and target setting
- Staff records, reports, and logs
- Managing operational standards and reporting

4. Inventory and Stock Control

- Effective stock control and inventory management
- Menu engineering for profitability
- Marketing and Design

5. Visual merchandising techniques

- Spa design and layout optimization
- Marketing strategies and action planning

6. Strategic Management

- Strategic action planning for spa growth
- Overcoming common management challenges

Where WELLNESS,
LEADERSHIP, and
BUSINESS unite for
spa success.

■ Course Details

At Beauty is Life Institute, we are committed to empowering future spa management professionals with the knowledge and skills needed to excel in the wellness industry. Our nationally recognized course blends remote theory with practical sessions at your closest Beauty is Life location in Paarl and Johannesburg. The program focuses on spa operations, leadership, and business strategies, providing you with a strong foundation for success in management roles. With comprehensive insights and hands-on experience, we'll guide you on your journey to becoming a confident and accomplished spa manager.

Our Paarl Branch:

Spice Route Destination;
Suid-Agter-Paarl Road
Paarl; Western Cape

Our Johannesburg Branch:

Honeydew Eco Village
281 Honeydew Road
Northriding AH,
Johannesburg; Gauteng

■ Investment in Your Future

Cost of Course: R18 000

Deposit of R1 800 is required to secure your place in the course.

Registration Cost: R550

Course Duration: 14 Days

The cost of the course includes:

- All necessary study materials.

At Beauty is Life Institute, we are dedicated to empowering the next generation of spa management professionals with the expertise and confidence needed to lead in the wellness industry. Our comprehensive courses combine in-depth theoretical knowledge with practical, hands-on training, ensuring students are fully equipped to excel in spa operations and management. We look forward to welcoming you to our community and supporting you on your journey to becoming a successful spa leader.

Let's Get In Touch

Contact Us

Paarl Enquiries:

info@beautyislifeinstitute.co.za

[Elzette Calitz 082 726 6514](tel:0827266514)

Johannesburg Enquiries:

[Elisna van Wyk 082 974 9207](tel:0829749207)

eli@healthyandwell.co.za

Visit Our Website

www.beautyislifeinstitute.co.za

